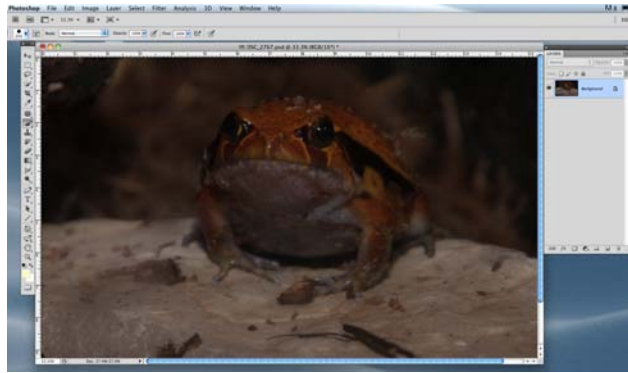
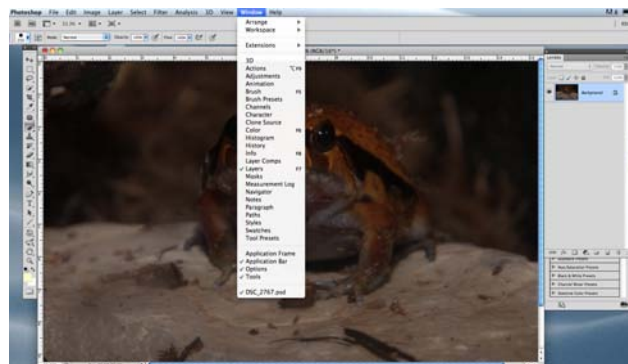


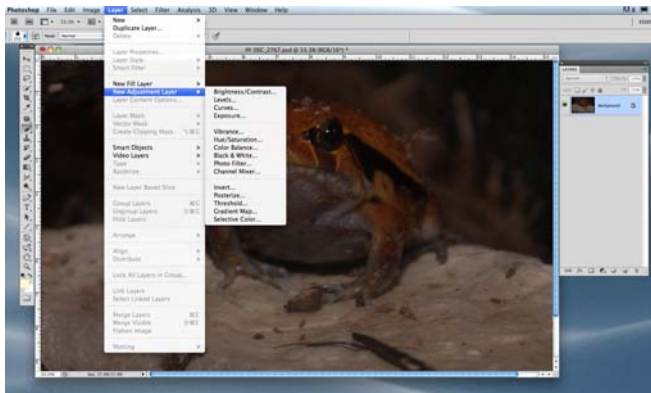
Layers
Phyllis Bankier



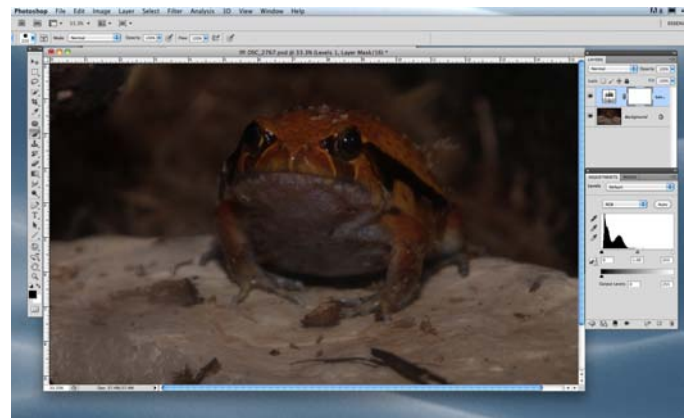
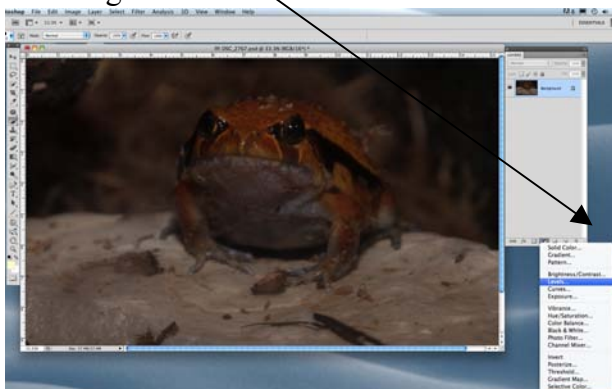
Open up your document.
There is one layer



Make sure your layers panel is open, if it isn't, go to the window menu and choose layers

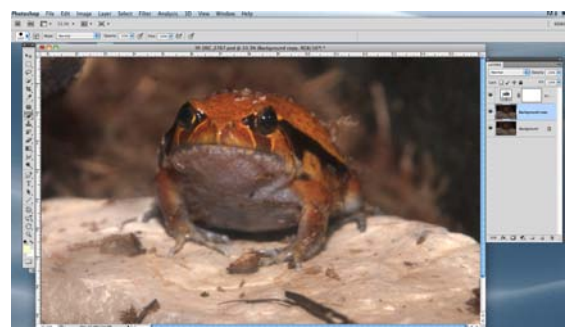
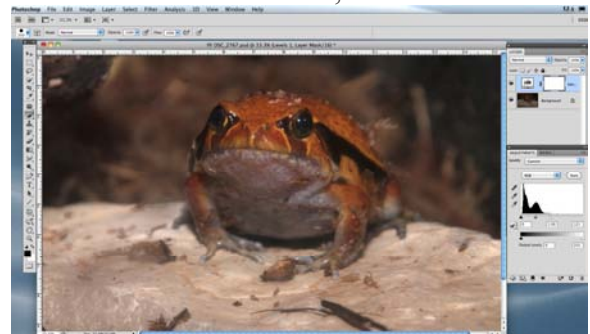


Most everything you will need for layers is in the layers menu. To choose an adjustment layer, you can go here or

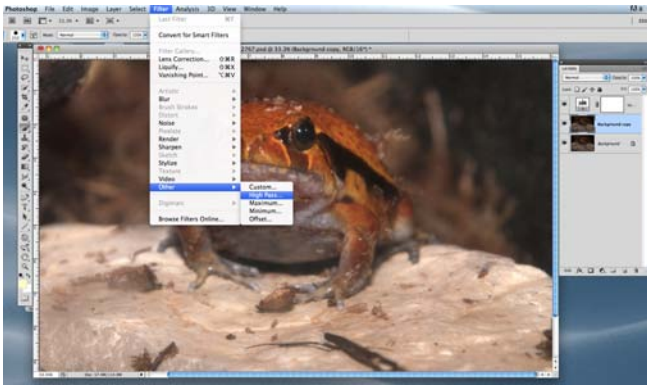


When you choose and adjustment layer, it brings up another window, in this case the adjustments for levels. It also creates a mask, if you didn't turn off the auto mask in the preferences.

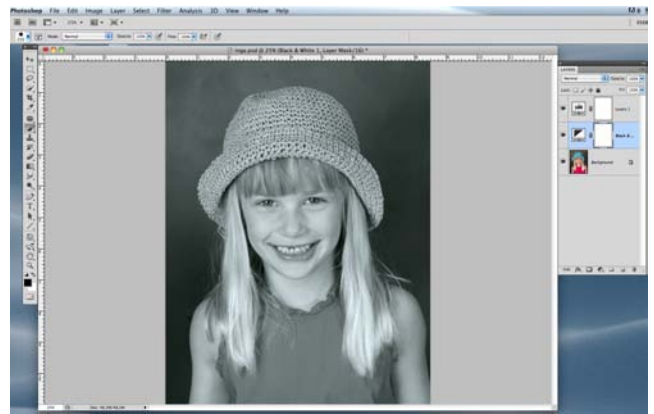
- Adjustment layers work in the same way as normal PhotoShop layers.
- You can apply an adjustment (such as levels or contrast changes) on a transparency/layer and it will become an adjustment layer.
- Next you take this adjustment layer and place it on the stack of layers.
- The adjustment layer will not actually affect the original image but by placing it on top of your original image, you then hypothetically, look through that adjustment to see your original image.
- Then when you look through the adjustment layer, everything seen through it seems to have that adjustment. Adjustment layers also remain editable and their settings can always be returned to and tweaked, etc.



Add another layer to add a filter.



Filters - Other - High Pass

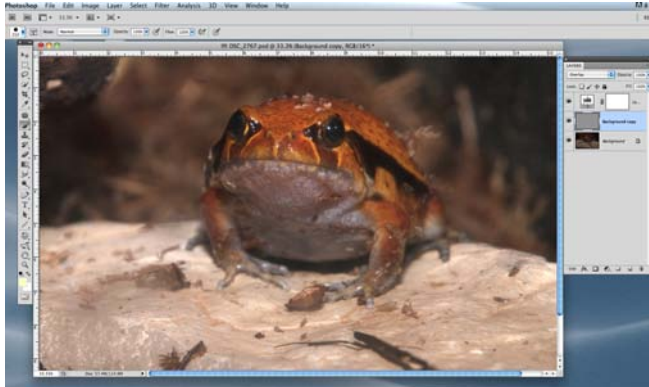


Layer Masks

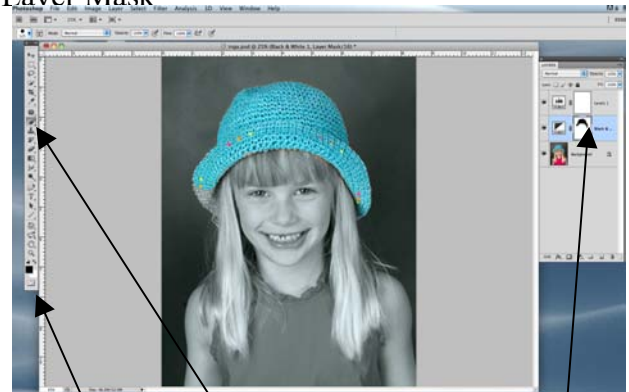
3 types

- **Layer Mask** - creates holes in a layer without erasing pixels.
- **Clipping Mask** - uses the boundaries of the active layer to crop the content of one or more layers above it.
- **Knockout mask** - uses the contents of the active layer to cut holes in the layers beneath it.

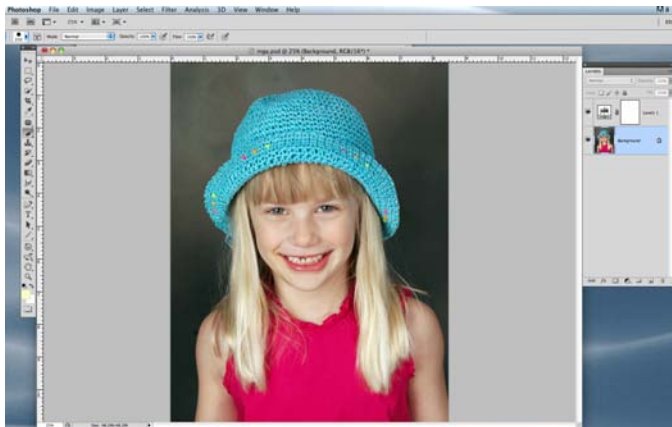
Layer Mask



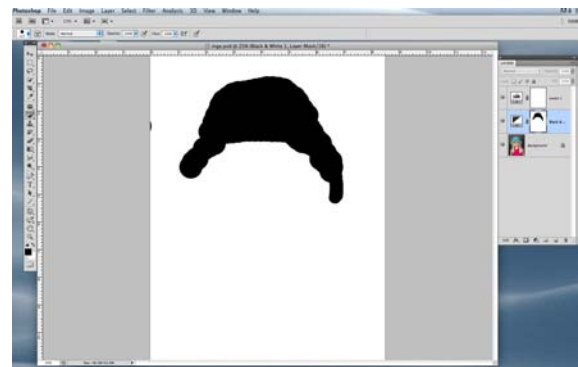
Go to the blending mode menu and choose overlay or any other. Blending modes blend two layers.
A good explanation of blending modes:
<http://www.northlite.net/ps/blend.htm>



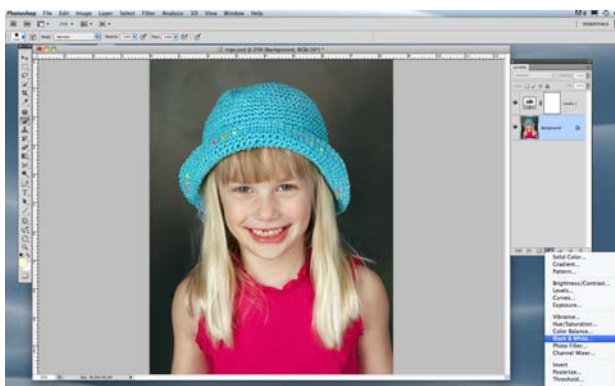
Click inside the black and white layer mask.
Use your paint brush to “create a hole in the layer without erasing pixels. Paint with black to create a hole and white to cover it up.



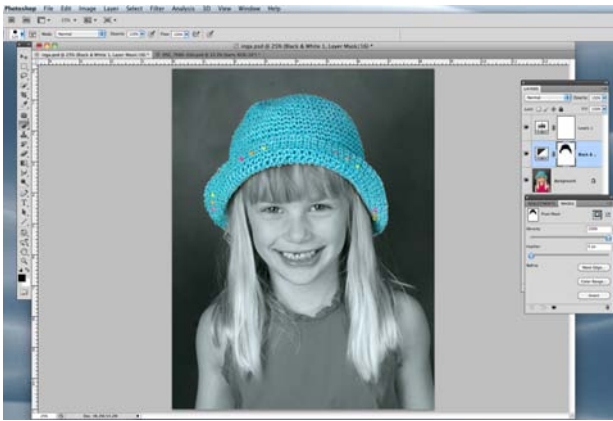
Adjustment layer



Option click in the layer mask to see what you may have missed.

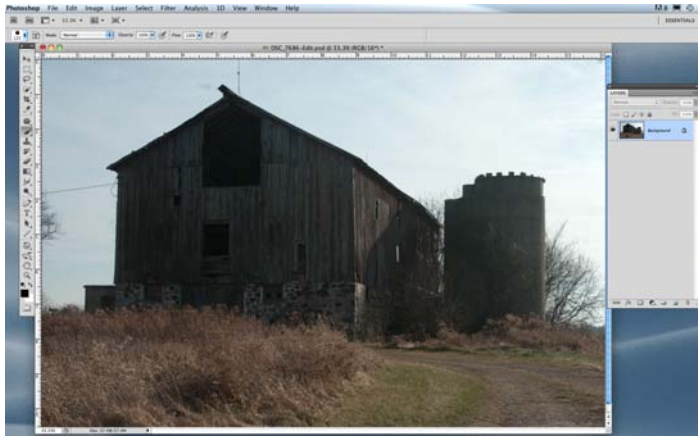
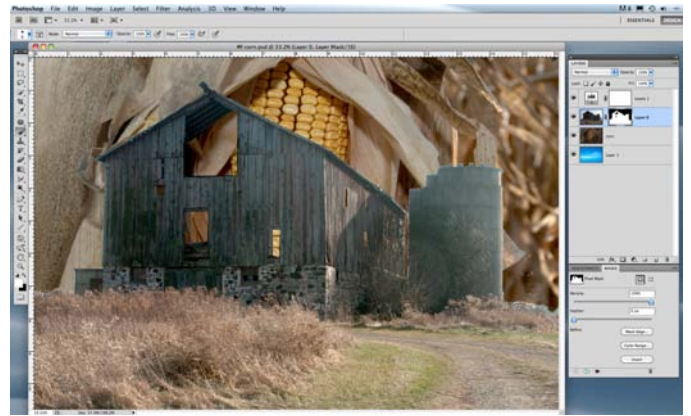


Add a black and white adjustment layer



Make a selection and add a layer mask
If your layer is a background layer, double click of to turn it into a regular layer. Then with the selection still active, click on add layer mask icon at the bottom

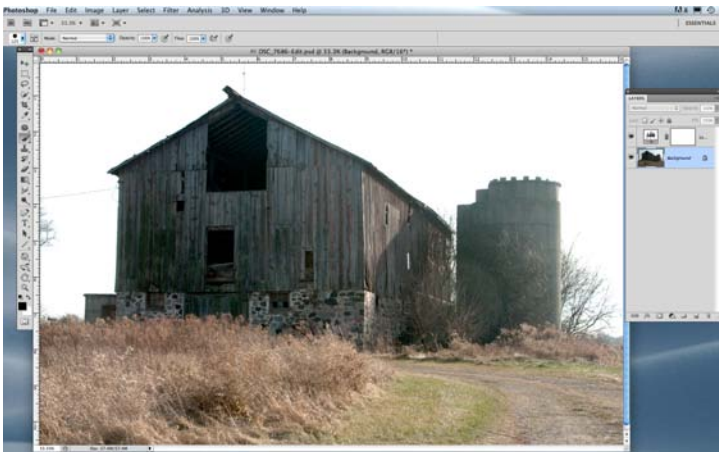
Go to the mask menu and you can choose to feather the selection, change the opacity, or refine the edges, etc.



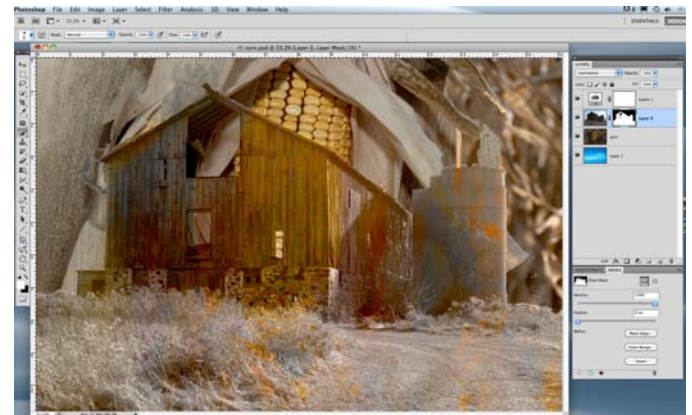
Dull photo



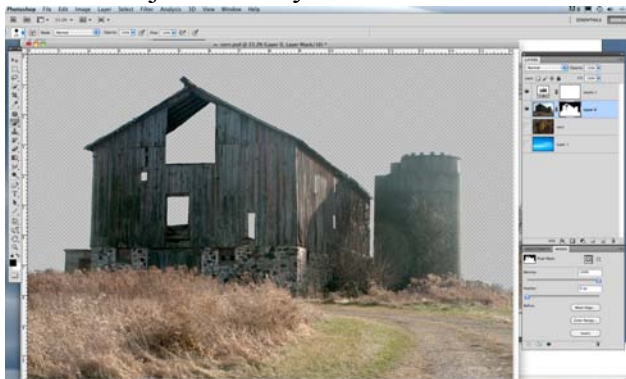
When you copy and paste another photo, it comes in as a new layer.



Add an adjustment layer and still dull!



Change the blending mode to luminosity





Girl with cat



Using the quick selection tool, select the cat and girl as best you can.



If your layer is a background layer, double click to turn it into a regular layer. Then with the selection still active, click on add layer mask icon at the bottom



If you click on the eyeball, on the bottom layer, you can see your selection. You can also see a little green around the hair and blue around the cat's ear.

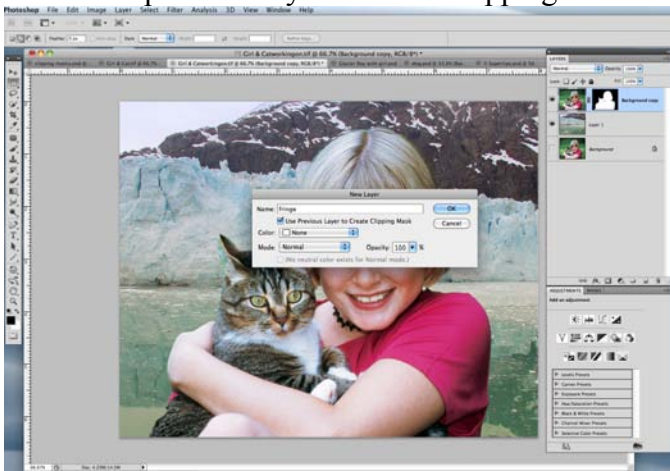


Bring in a new background.



To deal with the fringe (when background pixels cling to a foreground image) around the hair and cat's ear. Make sure you are on the layer with the mask. Choose Layer, new layer

Check use previous layer to create clipping mask.

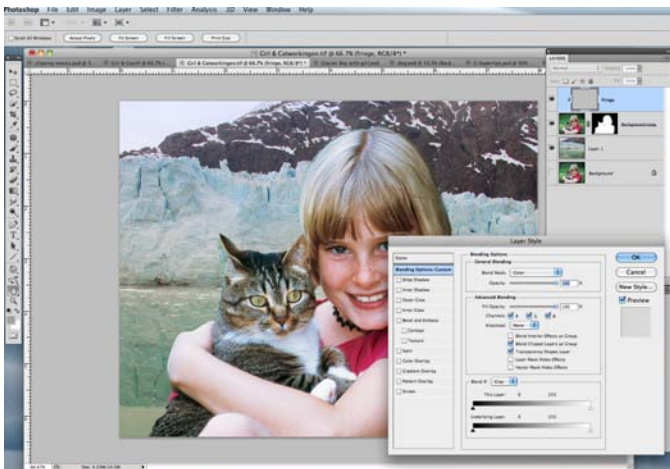


Use the eyedropper to sample color from the hair and ear. Then paint over the fringe pixels to eliminate unwanted color cast. Use low opacity on the brush. Don't overdo

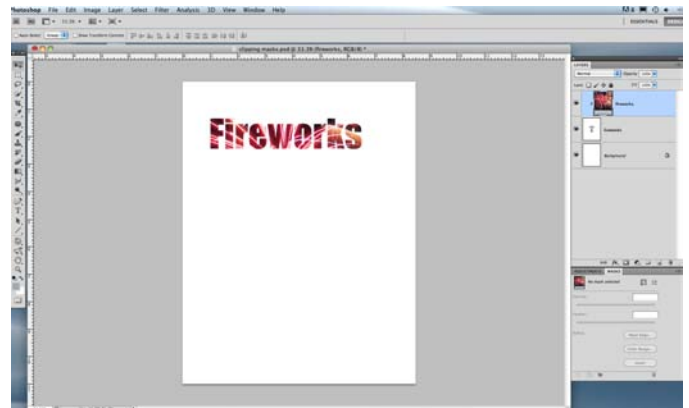


The clipping mask is indented above the other mask. Now you can paint outside the lines without affecting areas beyond the hair.

To make the girl and cat stand out, blur the background with a Gaussian blur.
Filter - blur - Gaussian blur

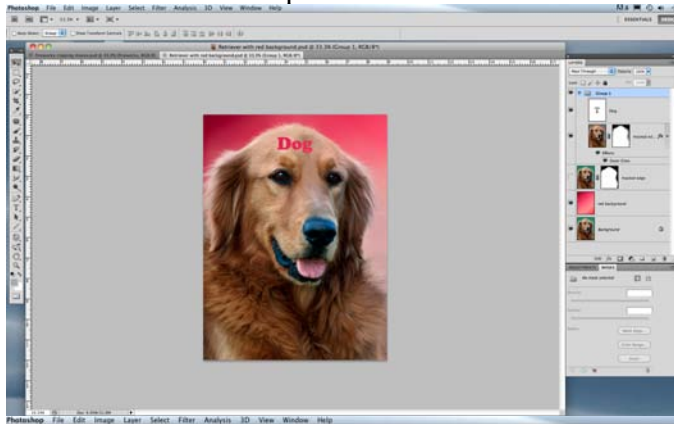


Double click on the clipping mask to bring up the Layer Style Menu. Change the blending option to color.

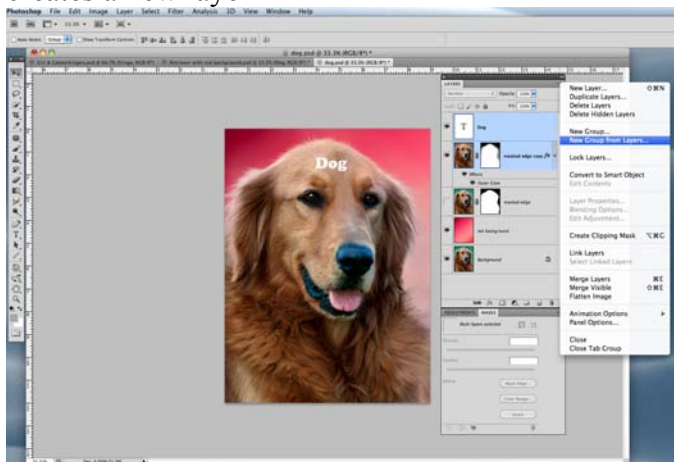


Another example of a clipping mask

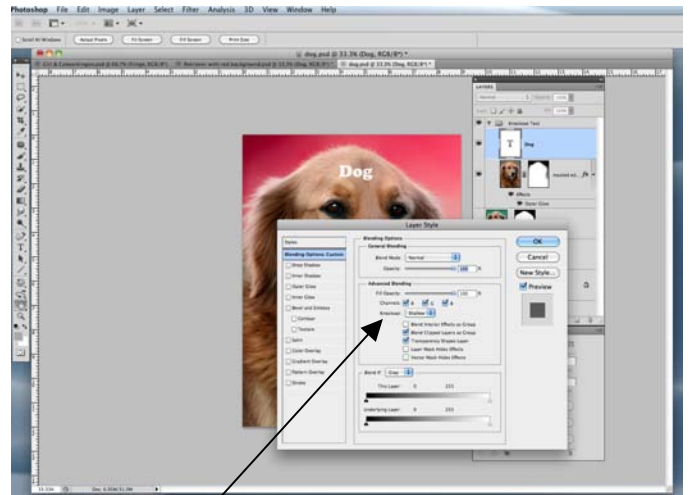
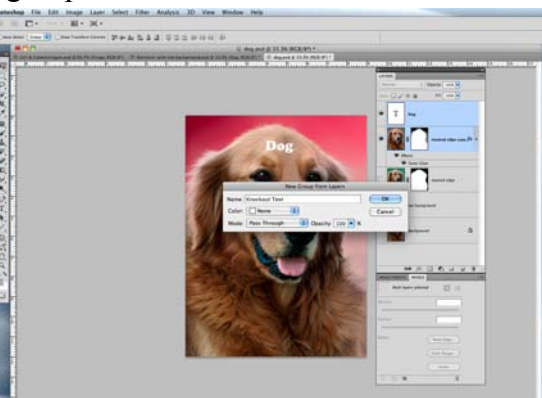
Knockout mask example



Write your caption in a text layer (this automatically creates a new layer)

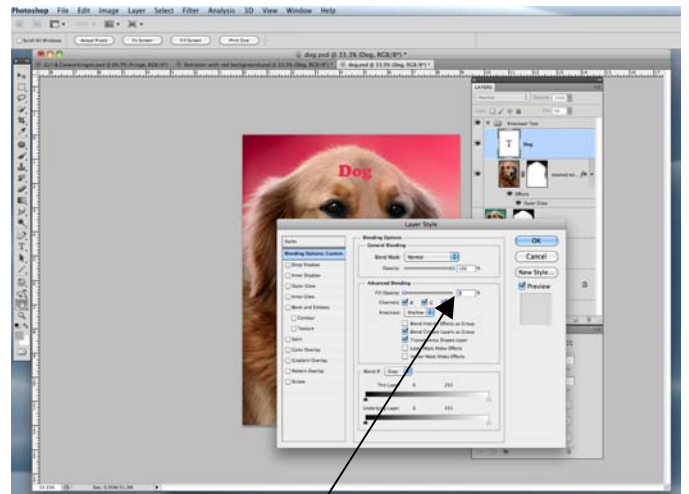


The selected layers need to be in a group. Name the group Knockout Text



Double click the text thumbnail to bring up the layer style menu.

Under Knockout choose shallow.



Change the fill opacity to 0%. This changes to translucency of pixels in a layer independently of drop shadows and other styles. But with the knockout option there is a symbiotic relationship. At 0% all you see is the background. Click ok